

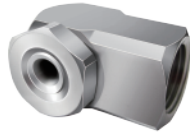
AA系列空心锥形喷嘴

AA Series hollow cone nozzles

<http://www.csan.cn>



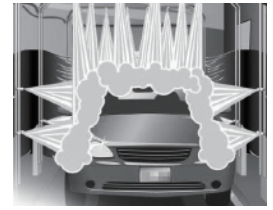
转角型



内螺纹 (A)



外螺纹 (AA)



汽车喷漆前处理喷淋

设计特点

AA/A 系列金属喷嘴的特点是能产生空心锥形喷雾形状, 喷射区域成环形, 喷雾角度为 51°-114°。

该类喷嘴能在大范围的流率和压力下产生分布均匀, 液滴大小为小到中等的喷雾。即使是在低压条件下, AA/A 系列金属喷嘴亦能对液体进行良好的雾化应用及产生极佳效果。对于要求快速热交换或要求有效的空悬液滴的冲击应用中, 这种效果尤其明显。

AA/A 系列金属喷嘴具有独特的旋流腔结构, 其大而通畅的流通道, 能减少或消除阻塞现象。

AA 系列金属喷嘴为外螺纹接头, A 系列金属喷嘴为内螺纹接头。

一般应用

- 气体洗涤与冷却
- 水冷却
- 灭尘控制
- 金属处理
- 化学反应处理
- 其它热交换应用

尺寸

转角喷嘴外螺纹系列

接口尺寸	A	B	C	D	E	L
1/8	12	14	17.8	9	7	26
1/4	17	18	22.8	12	10	34
3/8	19	22	27.8	13	11	35
1/2	22	25.4	33.2	17	14.5	46

基于各种类的最大/最重型号。

标准角

接口尺寸 (in.)	流量代码	喷嘴型号		材质代码			主体入口直径 (毫米)	额定喷嘴孔径 (毫米)	流量(升/分钟)										喷流角度		
		AA	A	BRASS	SS	316SS			0.2巴	0.5巴	1巴	1.5巴	2巴	3巴	4巴	5巴	6巴	7巴	0.5巴	1.5巴	6巴
1/8	0.5	●	●	●	●	●	0.79	1.2	-	0.16	0.23	0.28	0.32	0.39	0.46	0.51	0.56	0.60	-	58°	69°
	1	●	●	●	●	●	1.6	1.6	-	0.32	0.46	0.56	0.64	0.79	0.91	1.0	1.1	1.2	-	64°	76°
	2	●	●	●	●	●	2.0	2.0	-	0.64	0.91	1.1	1.3	1.6	1.8	2.0	2.2	2.4	52°	61°	69°
	3	●	●	●	●	●	2.4	2.4	-	0.97	1.4	1.7	1.9	2.4	2.7	3.1	3.3	3.6	52°	64°	77°
	5	●	●	●	●	●	3.2	3.2	1.0	1.6	2.3	2.8	3.2	3.9	4.6	5.1	5.6	6.0	56°	67°	76°
	8	●	●	●	●	●	4.0	4.0	1.6	2.6	3.6	4.5	5.2	6.3	7.3	8.2	8.9	9.6	56°	65°	70°
1/4	10	●	●	●	●	●	4.4	4.4	2.0	3.2	4.6	5.6	6.4	7.9	9.1	10.2	11.2	12.1	55°	65°	72°
	1	●	●	●	●	●	1.6	1.6	-	0.46	0.56	0.64	0.79	0.91	1.0	1.1	1.2	-	53°	67°	
	2	●	●	●	●	●	2.0	2.0	-	0.64	0.91	1.1	1.3	1.6	1.8	2.0	2.2	2.4	-	62°	71°
	3	●	●	●	●	●	2.4	2.4	-	0.97	1.4	1.7	1.9	2.4	2.7	3.1	3.3	3.6	51°	65°	78°
	5	●	●	●	●	●	3.6	3.6	1.0	1.6	2.3	2.8	3.2	3.9	4.6	5.1	5.6	6.0	63°	73°	79°
	8	●	●	●	●	●	4.0	4.0	1.6	2.6	3.6	4.5	5.2	6.3	7.3	8.2	8.9	9.6	61°	69°	73°
3/8	10	●	●	●	●	●	4.8	4.4	2.0	3.2	4.6	5.6	6.4	7.9	9.1	10.2	11.2	12.1	63°	70°	74°
	15	●	●	●	●	●	5.9	5.2	3.1	4.8	6.8	8.4	9.7	11.8	13.7	15.3	16.7	18.1	63°	71°	72°
	5	●	●	●	●	●	3.6	3.2	1.0	1.6	2.3	2.8	3.2	3.9	4.6	5.1	5.6	6.0	64°	73°	79°
	8	●	●	●	●	●	4.4	4.0	1.6	2.6	3.6	4.5	5.2	6.3	7.3	8.2	8.9	9.6	62°	70°	74°
	10	●	●	●	●	●	5.2	4.4	2.0	3.2	4.6	5.6	6.4	7.9	9.1	10.2	11.2	12.1	64°	72°	75°
	15	●	●	●	●	●	5.9	5.6	3.1	4.8	6.8	8.4	9.7	11.8	13.7	15.3	16.7	18.1	64°	72°	74°
1/2	20	●	●	●	●	●	7.1	6.4	4.1	6.4	9.1	11.2	12.9	15.8	18.2	20	22	24	63°	70°	74°
	25	●	●	●	●	●	7.5	7.5	5.1	8.1	11.4	14.0	16.1	19.7	23	25	28	30	63°	70°	74°
	30	●	●	●	●	●	8.3	7.9	6.1	9.7	13.7	16.7	19.3	24	27	31	33	36	63°	70°	74°
	25	●	●	●	●	●	9.5	6.4	5.1	8.1	11.4	14.0	16.1	19.7	23	25	28	30	63°	66°	71°
	30	●	●	●	●	●	9.5	7.5	6.1	9.7	13.7	16.7	19.3	24	27	31	33	36	67°	71°	75°
	40	●	●	●	●	●	9.5	9.1	8.2	12.9	18.2	22	26	32	36	41	45	48	72°	76°	78°
1/2	50	●	●	●	●	●	9.5	11.1	10.2	16.1	23	28	32	39	46	51	56	60	74°	79°	82°
	60	●	●	●	●	●	9.5	13.1	12.2	19.3	27	33	39	47	55	61	67	72	77°	82°	86°

广角

接口尺寸 (in.)	流量代码	喷嘴型号		材质代码			主体入口直径 (毫米)	额定喷嘴孔径 (毫米)	流量(升/分钟)										喷流角度		
		AA	A	BRASS	SS	316SS			0.2巴	0.5巴	1巴	1.5巴	2巴	3巴	4巴	5巴	6巴	7巴	0.5巴	1.5巴	6巴
1/8	0.5-0.5w	●	●	●	●	●	0.79	1.2	-	-	0.23	0.28	0.32	0.39	0.46	0.51	0.56	0.6	-	117°	98°
	1-1w	●	●	●	●	●	1.6	1.6	-	-	0.46	0.56	0.64	0.79	0.91	1.0	1.1	1.2	-	125°	110°
	2-3w	●	●	●	●	●	2.0	2.8	-	0.81	1.1	1.4	1.6	2.0	2.3	2.5	2.8	2.9	114°	114°	97°
	3-3w	●	●	●	●	●	2.4	2.8	-	0.97	1.4	1.7	1.9	2.4	2.7	3.1	3.3	3.7	114°	114°	97°
	3-5w	●	●	●	●	●	2.4	3.2	-	1.1	1.5	1.9	2.2	2.7	3.1	3.5	3.8	4.0	116°	110°	95°
	2-10w	●	●	●	●	●	2.0	4.4	-	1.3	1.9	2.3	2.6	3.2	3.7	4.2	4.6	5.0	130°	135°	120°
	5-5w	●	●	●	●	●	3.2	3.2	-	1.6	2.3	2.8	3.2	3.9	4.6	5.1	5.5	6.1	116°	110°	92°
	5-10w	●	●	●	●	●	3.2	4.4	1.3	2.1	3.0	3.6	4.2	5.1	5.9	6.6	7.3	7.9	126°	121°	95°
	8-10w	●	●	●	●	●	4.0	4.4	1.8	2.9	4.1	5.0	5.8	7.1	8.2	9.2	10.0	10.8	124°	112°	90°
	1/4	1-1w	●	●	●	●	●	1.6	1.6	-	-	0.46	0.56	0.64	0.79	0.91	1.0	1.1	1.2	-	117°
1-5w		●	●	●	●	●	1.6	3.2	-	-	0.77	0.96	1.1	1.3	1.5	1.7	1.9	2.0	-	123°	124°
1-10w		●	●	●	●	●	1.6	4.4	-	-	0.96	1.2	1.4	1.7	1.9	2.1	2.3	2.5	-	144°	139°
1-15w		●	●	●	●	●	1.6	5.6	-	-	1.1	1.3	1.5	1.9	2.2	2.4	2.7	2.9	-	128°	132°
2-5w		●	●	●	●	●	2.0	3.2	-	1.1	1.5	1.9	2.2	2.7	3.1	3.5	3.8	4.0	118°	123°	113°
2-10w		●	●	●	●	●	2.0	4.4	-	1.3	1.9	2.3	2.6	3.2	3.7	4.2	4.6	5.0	138°	136°	126°
5-5w		●	●	●	●	●	3.6	3.2	-	1.6	2.3	2.8	3.2	3.9	4.6	5.1	5.6	6.1	114°	113°	104°
5-10w		●	●	●	●	●	3.6	4.4	1.3	2.1	3.0	3.6	4.2	5.1	5.9	6.6	7.3	7.9	130°	130°	119°
5-15w		●	●	●	●	●	3.6	5.6	1.6	2.5	3.5	4.3	5.0	6.1	7.0	7.8	8.6	9.3	130°	132°	120°
8-10w		●	●	●	●	●	4.0	4.4	1.8	2.9	4.1	5.0	5.8	7.1	8.2	9.2	10.0	10.8	129°	129°	103°
3/8	10-10w	●	●	●	●	●	4.8	4.4	2.0	3.2	4.6	5.6	6.4	7.9	9.1	10.2	11.2	12.2	120°	108°	95°
	8-15w	●	●	●	●	●	4.0	5.6	2.2	3.5	5.0	6.1	7.1	8.7	10.0	11.2	12.3	13.2	129°	122°	107°
	10-15w	●	●	●	●	●	4.8	5.6	2.4	3.9	5.5	6.7	7.7	9.5	10.9	12.2	13.4	14.6	120°	108°	97°
	15-15w	●	●	●	●	●	6.0	5.6	3.0	4.8	6.8	8.4	9.7	11.8	13.7	15.3	16.7	18.0	101°	95°	88°
	5-10w	●	●	●	●	●	3.6	4.4	1.3	2.1	3.0	3.6	4.2	5.1	5.9	6.6	7.3	7.9	130°	123°	102°
	5-15w	●	●	●	●	●	3.6	5.6	1.6	2.5	3.5	4.3	5.0	6.1	7.0	7.8	8.6	9.3	138°	131°	112°
	8-10w	●	●	●	●	●	4.4	4.4	1.8	2.9	4.1	5.0	5.8	7.1	8.2	9.2	10.0	10.8	122°	110°	96°
	10-10w	●	●	●	●	●	5.2	4.4	2.0	3.2	4.6	5.6	6.4	7.9	9.1	10.2	11.2	12.2	116°	108°	93°
	8-15w	●	●	●	●	●	4.4	5.6	2.2	3.5	5.0	6.1	7.1	8.7	10.0	11.2	12.3	13.2	133°	120°	